

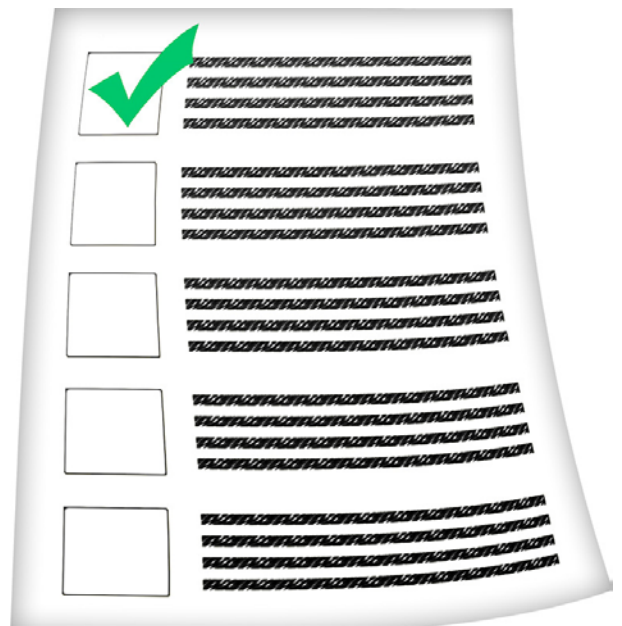


Dorset Learning Disability Partnership Board

Things to do

Targets for our Sub-groups

2011 - 2014



Introduction



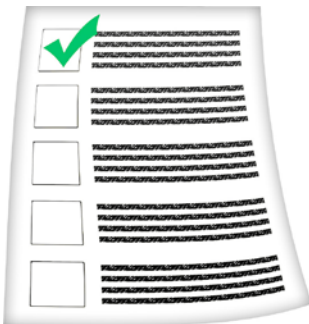
What is the Partnership Board?

The Partnership Board is a big group of people. They meet a few times a year. They are all interested in making things better for people with learning disabilities.



What are the Sub-groups?

There is not enough time at Partnership Board meetings to talk about everything. Each sub-group meets to talk about just one subject. Each group has one page in this booklet.



What are the targets for?

The targets are about the work that each sub-group must do. Targets help us to plan our work.



Complex needs and minority groups:

All groups must think about people with complex needs. **Complex needs** means people who need extra help with things like health and communication.

We must also make sure that our work includes people from **black and minority ethnic groups**.

Making it Happen

Paul St Quintin



This group is a **Joint Commissioning** group.

Joint: Different organisations working together, for example Social Care and Health Services.

Commissioning: Using money from the government to create and run care services.



1. Make the things in the **Joint Commissioning Strategy** happen. (A strategy is a plan, plus a list of ways to make the plan happen.)

By: March 2013



2. Make sure that there is money to keep learning disability **project work** going. Things like People First Dorset, the Partnership Board and the transition support workers.

Ongoing



Housing

Robin James

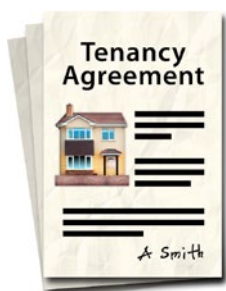
We work on developing housing and support for people with a Learning Disability in Dorset.

We work with housing and support providers, health services and councils. We check on services, share ideas and help make plans about housing.

1. Make the things in the **Learning Disability Housing Strategy** happen.
By: March 2014



2. Work with councils, housing associations and landlords to make sure there are **more homes** for people with learning disabilities.
Ongoing



3. Make sure that people have good **information and support**. This will help them to make decisions.
Ongoing

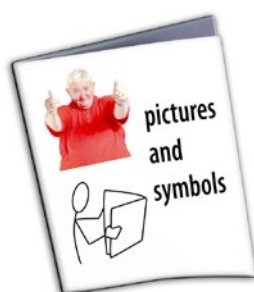
Safeguarding

Chris Kippax



We meet to talk about what can be done to keep people with learning disabilities safe from abuse.

Abuse is things like kicking, hitting, taking money, neglect, and calling people names. It is very serious and must be stopped.



1. Make “Easy Read” **leaflets** about keeping people safe from abuse. This will help people to know what abuse is and then report it.

By: October 2011



2. Set up and run **training** for people with learning disabilities and for family carers.

By: 31st March 2012



3. Make sure that people can have an **advocate** if they want or need one.

Ongoing



Fulfilling Lives

Alison Rumble

This group works on making people's lives more interesting and fun.

We talk about things like day services, making friends, arts, sports, museums, and activities that people with learning disabilities can do in Dorset.



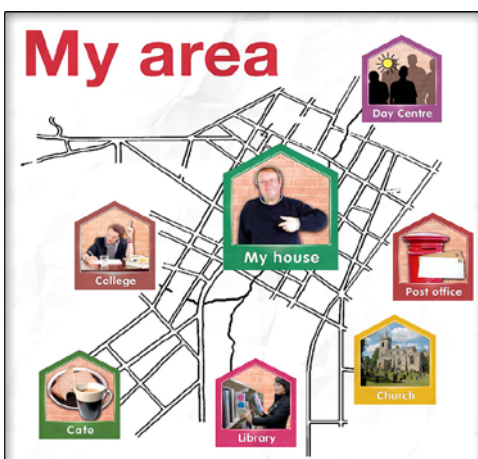
1. Create 2 more **Changing Places** toilets in Dorset.

By: 30th June 2012

2. Help people to be part of their **local communities**.

Help services and organisations to share information about activities that people can take part in. Count how many people this helps to find out how well the idea has worked.

By: 31st March 2012



Health

Tim Rose
Francis Stevens



Sometimes it can be hard for people with learning disabilities to stay healthy.

People often need lots of support from many different health experts. We want to make it easier for people to look after their health!



1. Make sure that 4 out of 5 people with a learning disability get a good quality **annual health check**.
2. Make sure there is a Learning Disability **Link person** in each hospital. Make sure hospitals all have rules about how to support people with learning disabilities.
3. Make sure young people aged 16+ can get a **Yellow Health Book**.
All by: 31st March 2012



Employment

Les Wales
Emma Williams

Work is good for you!

We talk about making it easier for people with learning disabilities to get jobs and training. There are lots of ways that people can work, from voluntary work to running their own business!



1. Car valeting. Set up a project for people to do this in East Dorset.



2. Germinators. Set up and run this **gardening project** in West Dorset.



3. Catering. Make the **buffet service** that we run now bigger, to cover the whole Dorset County Council area.

All by: 31st March 2012

Family Carers Support

Rachel Mason



Sometimes life can be difficult for Mums, Dads and other family members. Caring for a person with a learning disability can be complicated and tiring.

Rachel works on things that can be done to make life better for family carers.



1. Make sure that **carers have their say** about how services are run.
2. Work with Community Learning Disability Teams to make sure that carers get an **assessment every year**.
3. Make sure that people can choose where they go for **short breaks**. Personal Budgets can help people to be able to choose.



All by: 1st October 2012



Transitions

Mike Felstead
Paul St Quintin
Jo Fry

Transition is the word we use to describe moving from children's to adult's services. For example, leaving school, maybe getting to know a new social worker or moving house.

It can be an exciting time, but it can be tricky too!



1. Make sure that every young person is offered a **Personal Budget**. Make sure Community Learning Disability Teams offer them to everyone else too. **By: 31st March 2012**



2. **Person Centred Planning** and “**People and Places**” to be used in all special schools.

By: 31st March 2013

3. Hold **Transition Roadshows** in schools all over the county.

By: 31st March 2012

Personalisation

Phillipa Scott



We want to help people to live the life they want. Care services need to be planned around what each person needs.

We need to work on ways to make care services in Dorset more person-centred.



1. Offer all service users a **Personal Budget**.

By: 31st March 2013



2. **Person Centred Planning.**

When Dorset County Council uses private care providers, they will make sure that they use Person Centred Planning with the people they support.

By: 31st March 2013

Campus

Paul St Quintin
Sharon Morgan



Lots of people with learning disabilities used to live in large homes run by the NHS (National Health Service).

We have been helping people to move out of these hospitals and into their own homes with support. It has not been an easy job, but we are getting there!



1. Everyone must have a **Person Centred Plan**.
Ongoing



2. Support staff must help people to do activities in their **local communities**.
Ongoing



3. The **Quality Checkers** will look at how good people's support is.
By: 31st March 2012

Made: June 2011

Easy Read by: Clare Tarling @ People First Dorset

Thanks to: Photosymbols 4